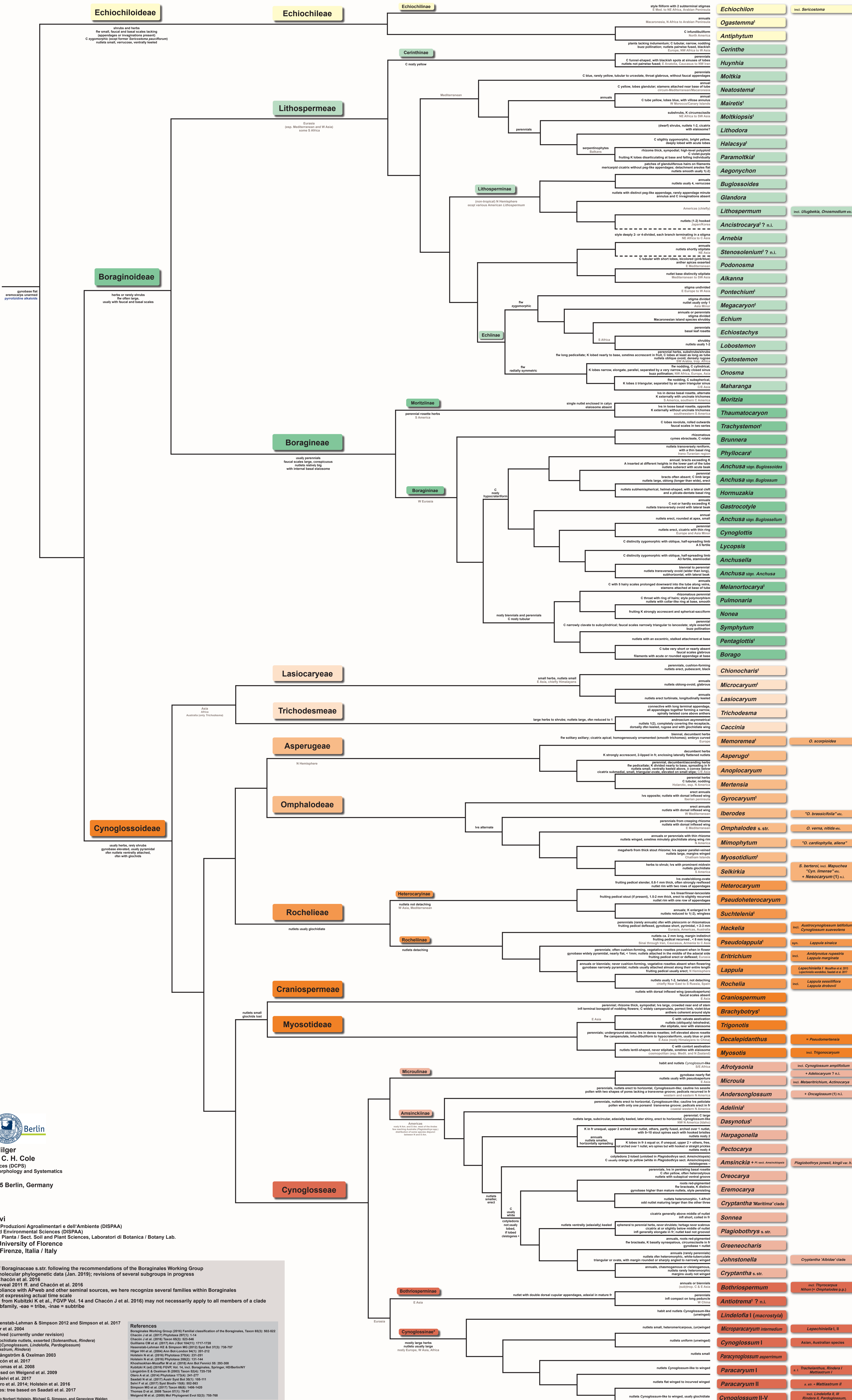


# BORAGINACEAE PHYLOGENETIC POSTER



Freie Universität Berlin  
Prof. Dr. Hartmut H. Hilger  
Dipl. rer. nat. Theodor C. H. Cole  
Dahlem Centre of Plant Sciences (DCPS)  
Institute of Biology – Plant Morphology and Systematics  
Freie Universität Berlin  
Altensteinstr. 6, D-14195 Berlin, Germany

Prof. Dr. Federico Selvi  
Dipartimento di Scienza delle Produzioni Agroalimentari e dell'Ambiente (DISPAA)  
Dept. Agrifood Production and Environmental Sciences (DISPAA)  
Sez. Scienza del Suolo e della Pianta / Sect. Soil and Plant Sciences, Laboratori di Botanica / Botany Lab.  
Università di Firenze / University of Florence  
P. le Cascine 28, 50144 Firenze, Italia / Italy

• Intrafamilial classification of Boraginaceae s.str. following the recommendations of the Boraginales Working Group  
• hypothetical tree based on molecular phylogenetic data (Jan. 2019); revisions of several subgroups in progress  
• gross phylogeny based on Chacón et al. 2016  
• suprageneric names after Reveal 2011 ff. and Chacón et al. 2016  
• contrary to APG, but in compliance with APWeb and other seminal sources, we here recognize several families within Boraginales  
• branch lengths deliberate, not expressing actual time scale  
• the characters listed (largely from Kutizki K et al., FGVP Vol. 14 and Chacón J et al. 2016) may not necessarily apply to all members of a clade  
• -aceae = family, -oideae = subfamily, -ae = tribe, -inae = subtribe  
† monospecific genera

Amsinckinae: tree based on Hasenbalg-Lehman & Simpson 2012 and Simpson et al. 2017  
Boraginiinae: tree based on Hilger et al. 2004  
\*Cynoglossinae: only partly resolved (currently under revision)  
paraphyletic taxa with generally glochidiate nutlets, exserted (Solentianus, Rindera) or inserted stamens and wingless (Cynoglossum, Lindelofia, Pardoglossum) to distinctly winged nutlets (Mattastuum, Rindera)  
Echiochiloideae: tree based on Långström & Oxelman 2003  
Lasiocaryeae: tree based on Chacón et al. 2017  
Lithospermeae: tree based on Thomas et al. 2008  
Lithosperminae/Echilineae: tree based on Weigend et al. 2009  
Megacaryon: position based on Selvi et al. 2017  
Omphalodeae: tree based on Otero et al. 2014; Holstein et al. 2016  
Pseudoheterocaryum and relatives: tree based on Saadati et al. 2017  
Thaumatacaryon: tree based on Saadati et al. 2017  
Thymus: tree based on Saadati et al. 2017  
Walden: tree based on Saadati et al. 2017

References  
Boraginales Working Group (2016) Familial classification of the Boraginales, Taxon 65(3): 902-922  
Chacón J et al. (2016) Phytologia 297(1): 1-14  
Chacón J et al. (2018) Taxon 67(3): 423-444  
Guillamón CE et al. (2017) Am. J. Bot. 94(11): 1717-1728  
Hasenbalg-Lehman KE & Simpson BJ (2012) Syst. Bot. 37(3): 738-757  
Hilger HH et al. (2004) Ann. Bot. London 94(1): 201-212  
Holstein N et al. (2016) Phytologia 278(2): 221-261  
Kutizki K (ed) (2014) Phytologia 278(2): 221-261  
Kutizki K & Oxelman B (2003) Taxon 52(4): 752-763  
Otero A et al. (2014) Phytologia 276(2): 241-277  
Saadati M et al. (2017) Austral. Syst. Bot. 50(1): 105-111  
Selvi F et al. (2017) Syst. Bot. 92(1): 52-64  
Simpson BJ et al. (2017) Taxon 66(1): 148-160  
Thomas D et al. (2008) Taxon 57(1): 75-87  
Weigend M et al. (2009) Mol. Phylog. Evol. 52(3): 755-768

Thanks for valuable advice and support to Norbert Holstein, Michael G. Simpson, and Genevieve Walden